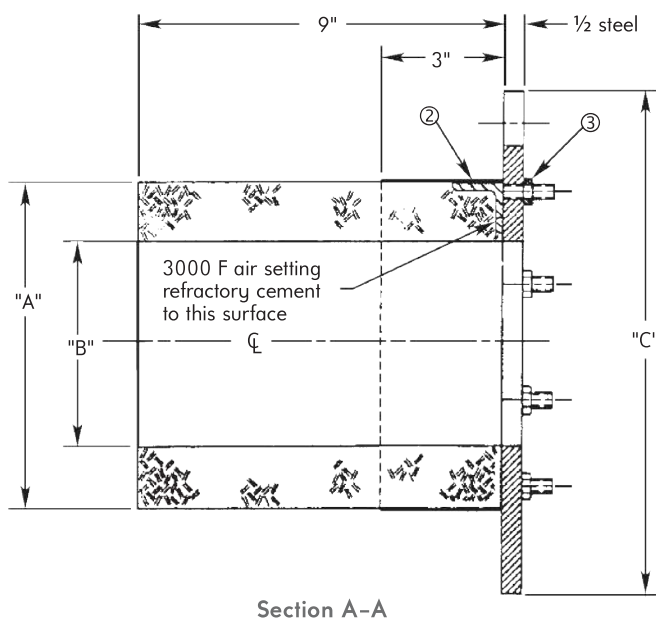


Use Assembly 4-9513-1 and 4-9513-3 (smaller mounting plate) for new installations.

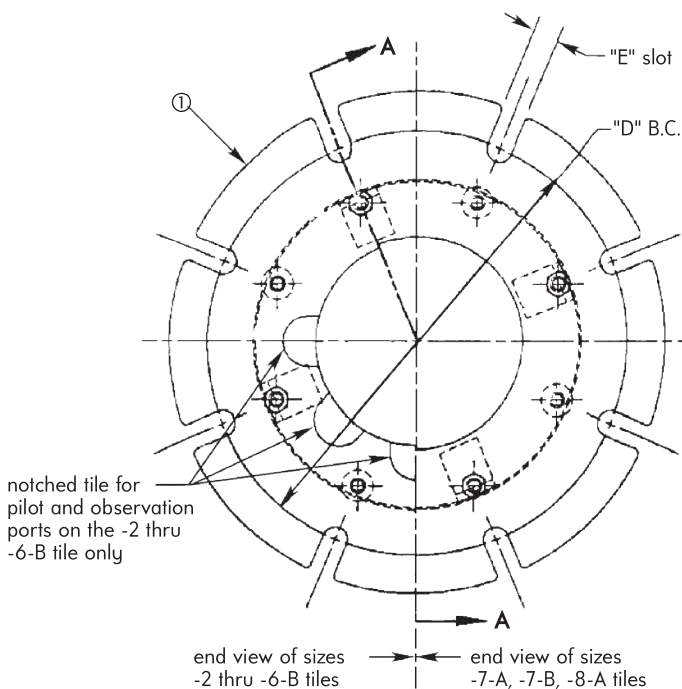
Use Assembly 4-9513-2 and 4-9513-4 (larger mounting plate) when replacing a 12" OD cast Z dimension tile and round mounting plate with this fiber tile.

Item	Description	Part Number				Qty.
		4422/4425-2 thru -6-B		4422/4425-7-A, -7-B, -8-A		
		4-9513-1	4-9513-2	4-9513-3	4-9513-4	
1	Mounting Plate	4-9480-2	4-9480-1	4-9477-2	4-9477-1	1
2	Fiber Tile Assembly	4-9515-2	4-9515-2	4-9515-1	4-9515-1	1
3	3/8"-16 Hex Nut	R510-2259	R510-2259	-	-	4
	1/2"-13 Hex Nut	-	-	R510-2319	R510-2319	4

Dimensions	Dimensions in inches			
"A" = OD of Fiber Tile	8	8	10	10
"B" = ID of Fiber Tile	5	5	7	7
"C" = OD of Mounting Flange	12 1/4	16	14 1/2	16
"D" = Bolt Circle	10 3/8	14 1/2	12 5/8	14 1/2
"E" = Slot Size	5/8	3/4	5/8	3/4



Section A-A



Weight in Pounds

4-9513-1.....	18	4-9513-2.....	30	4-9513-3.....	23	4-9513-4.....	28
4-9480-2.....	14	4-9480-1.....	26	4-9477-2.....	18	4-9477-1.....	23
4-9515-2.....	4	4-9515-2.....	4	4-9515-1.....	5	4-9515-1.....	5

DIMENSIONS SHOWN ARE SUBJECT TO CHANGE. PLEASE OBTAIN CERTIFIED PRINTS FROM FIVES NORTH AMERICAN COMBUSTION, INC. IF SPACE LIMITATIONS OR OTHER CONSIDERATIONS MAKE EXACT DIMENSION(S) CRITICAL.

CONTACT

fna.sales@fivesgroup.com
T +1 800 626 3477 - F +1 216 373 4237

Fives North American Combustion, Inc.
4455 East 71st Street - Cleveland, OH 44105 - USA
www.fivesgroup.com



fives
Industry can do it

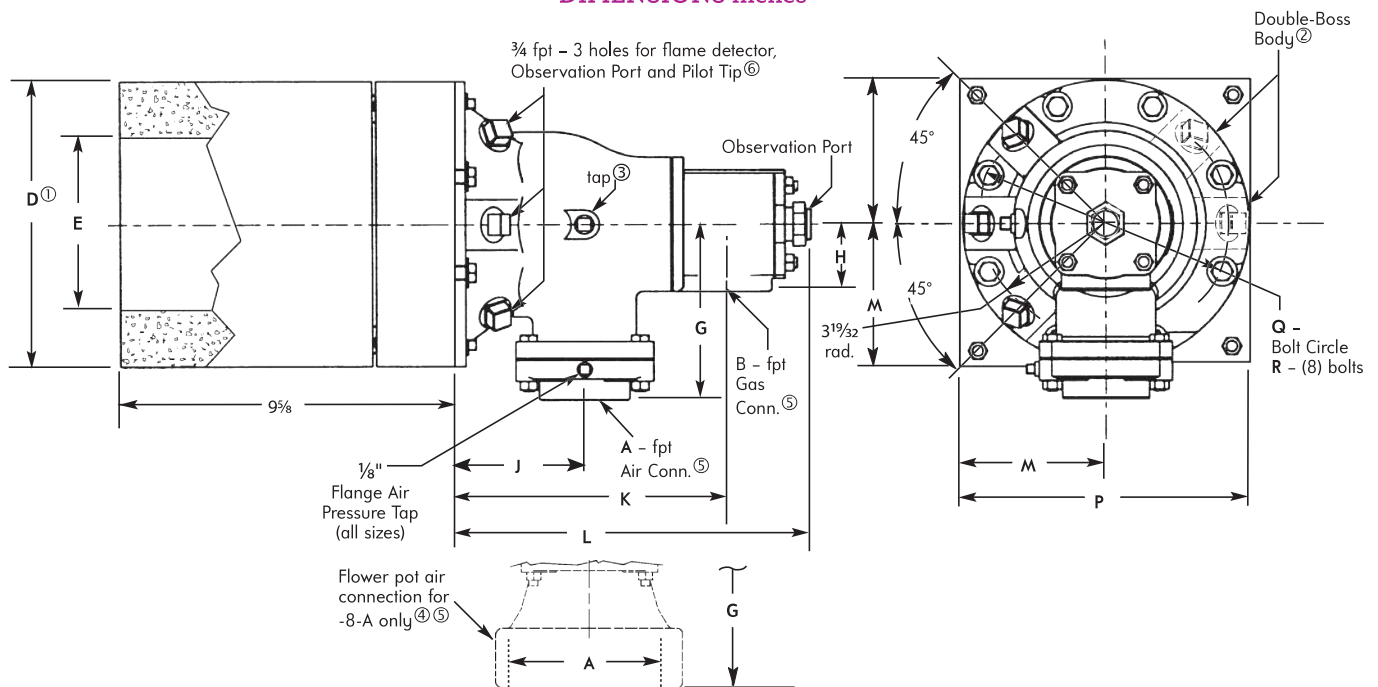
North American 4422 Nozzle-Mix Gas Burners "FM" Flangeless Mounting Series

Dimensions & Parts List 4422-4

"FM" FLANGELESS MOUNTING SERIES

4422-2-FM	THROUGH	-8-AFM	BURNER COMPLETE W/9" TILE and FLANGELESS MOUNTING
4422D-2-FM	THROUGH	-6-BFM	BURNER COMPLETE W/9" TILE, DOUBLE-BOSS BODY and FLANGELESS MOUNTING

DIMENSIONS inches

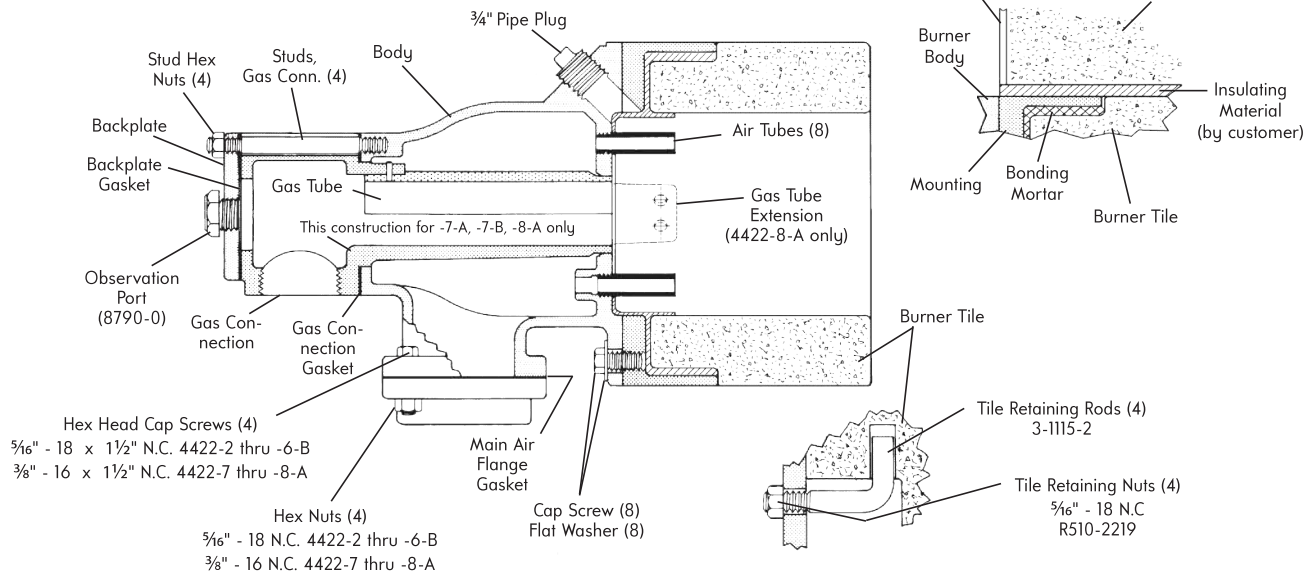


DIMENSIONS SHOWN ARE SUBJECT TO CHANGE. PLEASE OBTAIN CERTIFIED PRINTS FROM FIVES NORTH AMERICAN COMBUSTION, INC. IF SPACE LIMITATIONS OR OTHER CONSIDERATIONS MAKE EXACT DIMENSION(S) CRITICAL.

Burner designation	dimensions in inches													wt, lb
	A	B	D ^①	E	G	H	J	K	L	M	P	Q	R	
4422-2-FM	1¼	1	8½	5	5¼	2	3⅞	7⅞	10¼	4¼	8½	7½	¾	75
4422-3-FM	1½	1	8½	5	5¼	2	3⅞	7⅞	10¼	4¼	8½	7½	¾	75
4422-4-FM	2	1¼	8½	5	5¼	2	3⅞	7⅞	10¼	4¼	8½	7½	¾	75
4422-5-FM	2½	1½	8½	5	5¼	2	3⅞	7⅞	10¼	4¼	8½	7½	¾	75
4422-6-FM	3	1½	8½	5	5⅙	2	3⅞	7⅞	10¼	4¼	8½	7½	¾	75
4422-6-BFM	3	1½	8½	5	5⅙	2	3⅞	7⅞	10¼	4¼	8½	7½	¾	75
4422-7-AFM	4	2½	10	7	6⅙	2⅝	5¼	10⅝	13½	5	10	9⅝	½	130
4422-7-BFM	4	2½	10	7	6⅙	2⅝	5¼	10⅝	13½	5	10	9⅝	½	130
4422-8-AFM ^⑤	6	2½	10	7	10⅙	2⅝	5¼	10⅝	13½	5	10	9⅝	½	140

① Furnace opening should be ½" larger than dimension D to allow for fillets and draft on mounting box.
 ② Double-Boss bodies through -6-B sizes only. Pilot and flame supervisory connections are ¾ fpt on 45° and 90° angles as shown. See Dimensions and Parts List 4422-5 for double-boss burners with mounting flanges.
 ③ ¼" body air pressure tap on -2, -3, -4, -5, -6, and 6-B. ⅝" body air pressure tap on -7-A, -7-B and 8-A
 ④ "Flower Pot" type flange for -8-A. Note larger G dimension
 ⑤ For 4422-8-A, air and gas connections cannot be piped on the same plane. Flower pot type air connection flange would interfere with the 2½" gas line.
 ⑥ Pilot, Flame Detector, and Observation Port positions are interchangeable as long as Pilot and Flame Detector are in adjacent holes.
 ¾" pipe plug furnished for use if no Pilot.

FLANGELESS MOUNTED GAS BURNER PARTS LIST



PARTS for 4422 "FM" Flangeless Mounting Burners

Part name	4422-2-FM	4422-3-FM	4422-4-FM	4422-5-FM	4422-6-FM	4422-6-BFM	4422-7-AFM	4422-7-BFM	4422-8-AFM
Burner only (assembly)	4422-2-BO	4422-3-BO	4422-4-BO	4422-5-BO	4422-6-BO	4422-6-BBO	4422-7-ABO	4422-7-BBO	4422-8-ABO
Body	3-2466-9	3-2466-9	3-2466-9	3-2466-9	3-2466-10	3-2466-10	3-3267-3	3-3267-3	3-3267-4
Double-Boss Burner only (assembly)**	4422D-2-BO	4422D-3-BO	4422D-4-BO	4422D-5-BO	4422D-6-BO	4422D-6-BBO	—	—	—
Double-Boss Body**	OC3-2042-1	OC3-2042-1	OC3-2042-1	OC3-2042-1	OC3-2042-2	OC3-2042-2	—	—	—
Gas Connection Assy.	4-8620-1	4-8620-1	4-8620-2	4-8620-3	4-8620-3	4-8620-3	4-8620-4	4-8620-4	4-8620-5
Gas Connection	3-2465-4	3-2465-4	3-2465-5	3-2465-6	3-2465-6	3-2465-6	3-3268-2	3-3268-2	4-6126-1
Gas Tube	3-2468-2	3-2468-2	3-2468-2	3-2468-2	3-2468-2	3-2468-2	†	†	†
Gas Tube Ext.	—	—	—	—	—	—	—	—	4-6121-1
Backplate	4-2459-2	4-2459-2	4-2459-2	4-2459-2	4-2459-2	4-2459-2	3-3269-2	3-3269-2	3-3269-2
Backplate Gasket	3-2607-1	3-2607-1	3-2607-1	3-2607-1	3-2607-1	3-2607-1	3-3272-1	3-3272-1	3-3272-1
Studs, Gas Conn. (4)	3-2584-1	3-2584-1	3-2584-1	3-2584-1	3-2584-1	3-2584-1	3-3325-1	3-3325-1	3-3325-1
Stud Hex Nuts (4)	R510-2219	R510-2219	R510-2219	R510-2219	R510-2219	R510-2219	R510-2259	R510-2259	R510-2259
Gas Conn. Gasket	3-2473-1	3-2473-1	3-2473-1	3-2473-1	3-2473-1	3-2473-1	3-3272-1	3-3272-1	3-3272-1
Air Tubes (8)	3-3643-1‡	3-3643-2‡	3-3640-2	3-3639-2	3-3554-2	3-5042-1	3-3273-3	3-3273-4	4-3684-2
Main Air Flange	3-2544-2	3-2544-1	4-1695-2	4-1695-3	4-1695-9	4-1695-9	4-1695-5	4-1695-5	8765-8X7-D
Main Air Flange Gasket	4-5371-2	4-5371-2	4-5371-2	4-5371-2	4-5371-2	4-5371-2	4-5371-3	4-5371-3	4-5371-3
Hex Head Cap Screw (4)	←			R066-2670	→			R066-2950 →	
Hex Nuts (4)	R510-2219	R510-2219	R510-2219	R510-2219	R510-2219	R510-2219	R510-2259	R510-2259	R510-2259
Flangeless Mounting (hard wall)	3-4928-1	3-4928-1	3-4928-1	3-4928-1	3-4928-1	3-4928-1	3-3459-1	3-3459-1	3-3459-1
Cap Screw (8)	←			R066-2920	→			R066-3420 →	
Flat Washer (8)	←			R970-7300-C	→			R970-7370-C →	

Flangeless Mounting & Tile Assemblies

I. Standard

for Burner Complete w/9" Tile

Mounting & Tile Assy.*	3-6668-30	3-6668-30	3-6668-30	3-6668-30	3-6668-30	3-6668-30	3-6668-31	3-6668-31	3-6668-31
Standard Burner Tile	4-2121-2	4-2121-2	4-2121-2	4-2121-2	4-2121-2	4-2121-2	4-2142-2	4-2142-2	4-2142-2

II. D Series

for Burner Complete w/ Double-Boss Body and 9" Tile

Mounting & Tile Assy.*	3-6668-29	3-6668-29	3-6668-29	3-6668-29	3-6668-29	3-6668-29	—	—	—
Burner Tile (9") [Double-Boss]	4-2121-4	4-2121-4	4-2121-4	4-2121-4	4-2121-4	4-2121-4	—	—	—

* Includes complete mounting, tile, and retainer assembly.

** Double Pilot and Flame Supervisory connections.

† Gas tube is cast with Gas Connection for -7-A, -7-B, and -8-A sizes.

‡ Includes 3-3638-1adapter.

WARNING: Situations dangerous to personnel and property may exist with the operation and maintenance of any combustion equipment. The presence of fuels, oxidants, hot and cold combustion products, hot surfaces, electrical power in control and ignition circuits, etc., are inherent with any combustion application. Components in combustion systems may exceed 160°F (71°C) surface temperatures and present hot surface contact hazard. Fives North American Combustion, Inc. suggests the use of combustion systems that are in compliance with all Safety Codes, Standards, Regulations and Directives; and care in operation.

CONTACT

fna.sales@fivesgroup.com
T +1 800 626 3477 - F +1 216 373 4237

Fives North American Combustion, Inc.
4455 East 71st Street - Cleveland, OH 44105 - USA
www.fivesgroup.com



fives
Industry can do it

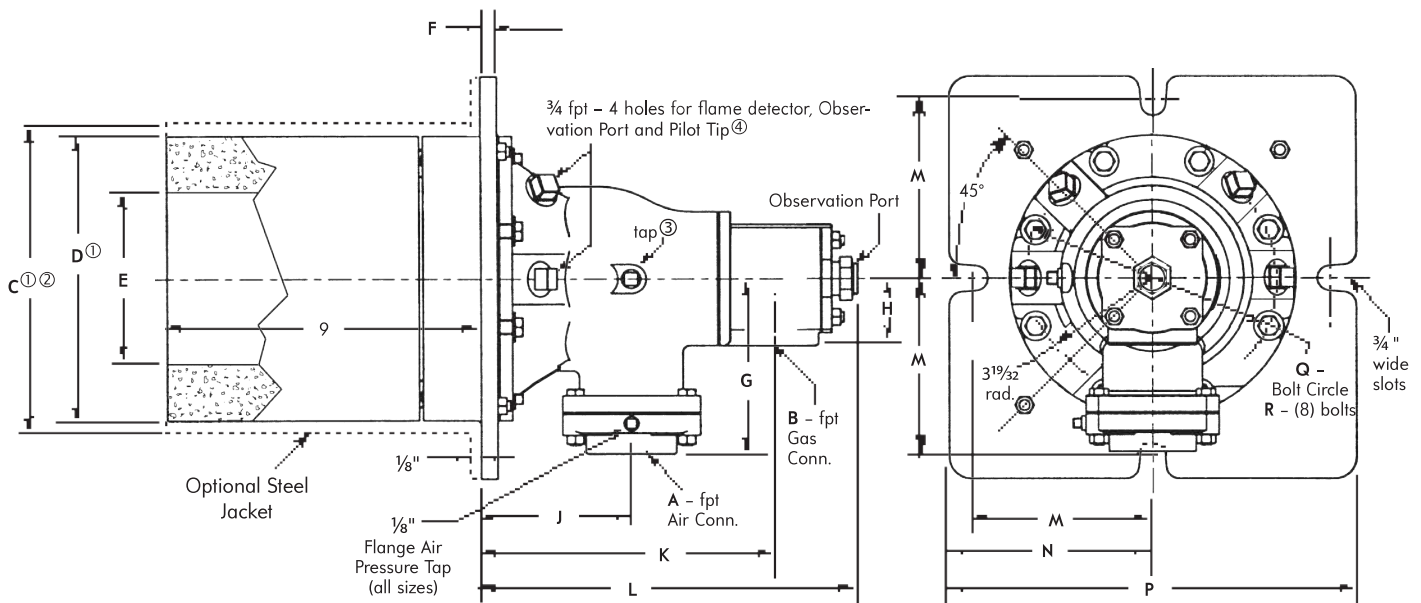
North American 4422 Nozzle-Mix Gas Burners Double-Boss Body Series

Dimensions & Parts List 4422-5

DOUBLE-BOSS BODY SERIES

4422D-2-BO	THROUGH	-6-BBO	BURNER ONLY WITH DOUBLE-BOSS BODY
4422D-2	THROUGH	-6-B	BURNER COMPLETE W/9" TILE and DOUBLE-BOSS BODY
4422D-2-LC	THROUGH	-6-BLC	BURNER COMPLETE W/9" TILE, STEEL JACKET, and DOUBLE-BOSS BODY
4422D-2-L4	THROUGH	-6-BL4	BURNER COMPLETE W/9" TILE, 304 SST JACKET, and DOUBLE-BOSS BODY
4422D-2-L9	THROUGH	-6-BL9	BURNER COMPLETE W/9" TILE, 309 SST JACKET, and DOUBLE-BOSS BODY

DIMENSIONS inches

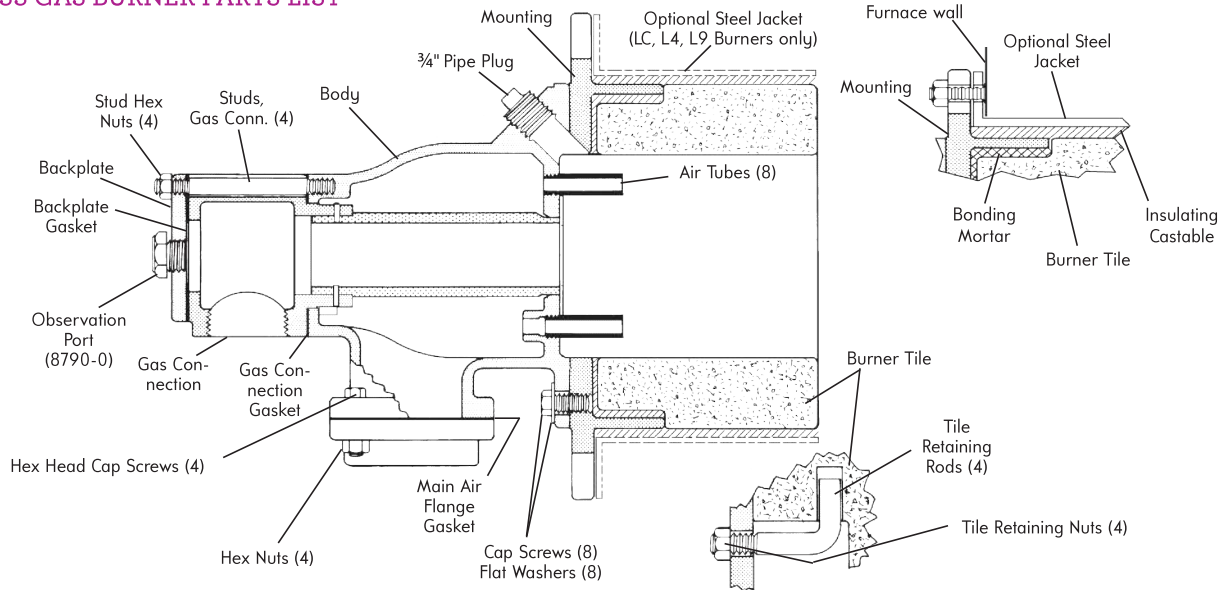


Burner designation	dimensions in inches																wt, lb
	A	B	C ^{①②}	D ^①	E	F	G	H	J	K	L	M	N	P	Q	R	
4422D-2	1¼	1	9½	8½	5	½	5¼	2	4¾	8¾	10¾	5¼	6	12	7½	¾	75
4422D-3	1½	1	9½	8½	5	½	5¼	2	4¾	8¾	10¾	5¼	6	12	7½	¾	75
4422D-4	2	1¼	9½	8½	5	½	5¼	2	4¾	8¾	10¾	5¼	6	12	7½	¾	75
4422D-5	2½	1½	9½	8½	5	½	5¼	2	4¾	8¾	10¾	5¼	6	12	7½	¾	75
4422D-6	3	1½	9½	8½	5	½	5¼	2	4¾	8¾	10¾	5¼	6	12	7½	¾	75
4422D-6-B	3	1½	9½	8½	5	½	5¼	2	4¾	8¾	10¾	5¼	6	12	7½	¾	75

- ① Furnace opening should be ½" larger than dimension C or D to allow for fillets and draft on mounting plate.
- ② C dimension used for jacketed tiles only.
- ③ ¼" body air pressure tap on -2, -3, -4, -5, -6, and 6-B.
- ④ Pilot, Flame Detector, and Observation Port positions are interchangeable as long as Pilot and Flame Detector are in adjacent holes. ¾" pipe plug furnished for use if no Pilot. This permits a variety of piping arrangements or redundant pilots and flame detectors. It is available only in -2 through -6-B burner sizes and is otherwise identical to standard burner.

DIMENSIONS SHOWN ARE SUBJECT TO CHANGE. PLEASE OBTAIN CERTIFIED PRINTS FROM FIVES NORTH AMERICAN COMBUSTION, INC. IF SPACE LIMITATIONS OR OTHER CONSIDERATIONS MAKE EXACT DIMENSION(S) CRITICAL.

WARNING: Situations dangerous to personnel and property may exist with the operation and maintenance of any combustion equipment. The presence of fuels, oxidants, hot and cold combustion products, hot surfaces, electrical power in control and ignition circuits, etc., are inherent with any combustion application. Components in combustion systems may exceed 160°F (71°C) surface temperatures and present hot surface contact hazard. Fives North American Combustion, Inc. suggests the use of combustion systems that are in compliance with all Safety Codes, Standards, Regulations and Directives; and care in operation.



PARTS for 4422D BURNERS (DOUBLE-BOSS)

Part name	4422D-2	4422D-3	4422D-4	4422D-5	4422D-6	4422D-6-B
Burner Only (assembly)	4422D-2-BO	4422D-3-BO	4422D-4-BO	4422D-5-BO	4422D-6-BO	4422D-6-BBO
Body	OC3-2042-1	OC3-2042-1	OC3-2042-1	OC3-2042-1	OC3-2042-2	OC3-2042-2
Gas Connection Assy.	4-8620-1	4-8620-1	4-8620-2	4-8620-3	4-8620-3	4-8620-3
Gas Connection	3-2465-4	3-2465-4	3-2465-5	3-2465-6	3-2465-6	3-2465-6
Gas Tube	3-2468-2	3-2468-2	3-2468-2	3-2468-2	3-2468-2	3-2468-2
Backplate	4-2459-2	4-2459-2	4-2459-2	4-2459-2	4-2459-2	4-2459-2
Backplate Gasket	3-2607-1	3-2607-1	3-2607-1	3-2607-1	3-2607-1	3-2607-1
Studs, Gas Conn. (4)	3-2584-1	3-2584-1	3-2584-1	3-2584-1	3-2584-1	3-2584-1
Stud Hex Nuts (4)	R510-2219	R510-2219	R510-2219	R510-2219	R510-2219	R510-2219
Gas Conn. Gasket	3-2473-1	3-2473-1	3-2473-1	3-2473-1	3-2473-1	3-2473-1
Air Tubes (8)	3-3643-1†	3-3643-2†	3-3640-2	3-3639-2	3-3554-2	3-5042-1
Main Air Flange	3-2544-2	3-2544-1	4-1695-2	4-1695-3	4-1695-9	4-1695-9
Main Air Flange Gasket	4-5371-2	4-5371-2	4-5371-2	4-5371-2	4-5371-2	4-5371-2
Hex Head Cap Screws (4)				R066-2670		
Hex Nuts (4)				R510-2219		
Mounting (hard wall)	3-3257-1	3-3257-1	3-3257-1	3-3257-1	3-3257-1	3-3257-1
Double-Boss Burner Tile (9")	4-2121-4	4-2121-4	4-2121-4	4-2121-4	4-2121-4	4-2121-4
Tile Retaining Rods (4)	3-1115-2	3-1115-2	3-1115-2	3-1115-2	3-1115-2	3-1115-2
Tile Retaining Nuts (4)				R510-2219		
Cap Screws (8)				R066-2920		
Flat Washers (8)				R970-7300-C		
Mounting & Tile Assemblies						
Standard	for Burner Complete w/9" Tile					
Mounting & Tile Assy.*	3-6668-25	3-6668-25	3-6668-25	3-6668-25	3-6668-25	3-6668-25
LC Series	for Burner Complete w/9" Tile and Steel Jacket					
Mounting & Tile Assy.*	3-6668-26	3-6668-26	3-6668-26	3-6668-26	3-6668-26	3-6668-26
Tile & Jacket Assembly ^Δ	4-21583-7	4-21583-7	4-21583-7	4-21583-7	4-21583-7	4-21583-7
Jacket (steel)	4-5377-3	4-5377-3	4-5377-3	4-5377-3	4-5377-3	4-5377-3
L4 Series	for Burner Complete w/9" Tile and 304 SST Jacket					
Mounting & Tile Assy.*	3-6668-27	3-6668-27	3-6668-27	3-6668-27	3-6668-27	3-6668-27
Tile & Jacket Assembly ^Δ	4-21583-8	4-21583-8	4-21583-8	4-21583-8	4-21583-8	4-21583-8
Jacket (304 SST)	4-5377-4	4-5377-4	4-5377-4	4-5377-4	4-5377-4	4-5377-4
L9 Series	for Burner Complete w/9" Tile and 309 SST Jacket					
Mounting & Tile Assy.*	3-6668-28	3-6668-28	3-6668-28	3-6668-38	3-6668-28	3-6668-28
Tile & Jacket Assembly ^Δ	4-21583-9	4-21583-9	4-21583-9	4-21583-9	4-21583-9	4-21583-9
Jacket (309 SST)	4-5377-6	4-5377-6	4-5377-6	4-5377-6	4-5377-6	4-5377-6

* Includes complete mounting, tile, jacket, and retainer assembly.

^Δ Includes tile and jacket only.

† Includes 3-3638-1 adapter.

CONTACT

fna.sales@fivesgroup.com
T +1 800 626 3477 - F +1 216 373 4237

Fives North American Combustion, Inc.
4455 East 71st Street - Cleveland, OH 44105 - USA
www.fivesgroup.com



North American 4422 Nozzle-Mix Gas Burners "HL" and "HR" Hinged Series

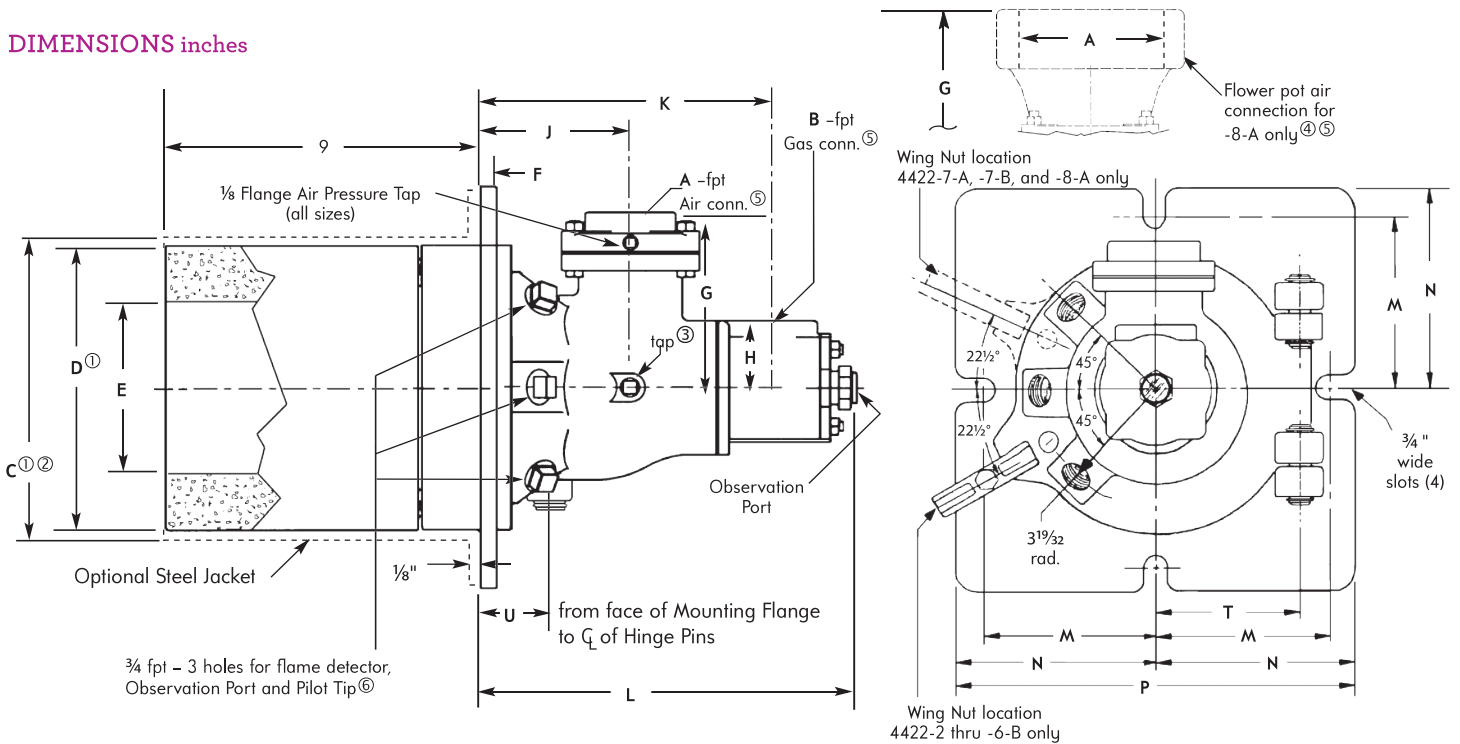
Dimensions & Parts List 4422-6

"HL" AND "HR" HINGED SERIES

4422HL AND HR-2-BO	THROUGH	-8-ABO	HINGED BURNER ONLY
4422HL AND HR-2	THROUGH	-8-A	HINGED BURNER COMPLETE W/9" TILE
4422HL AND HR-2-LC	THROUGH	-8-ALC	HINGED BURNER COMPLETE W/9" TILE and STEEL JACKET
4422HL AND HR-2-L4	THROUGH	-8-AL4	HINGED BURNER COMPLETE W/9" TILE and 304 SST JACKET
4422HL AND HR-2-L9	THROUGH	-8-AL9	HINGED BURNER COMPLETE W/9" TILE and 309 SST JACKET

Note: HR (Hinged-Right) model shown below.

DIMENSIONS inches



Burner designation	dimensions in inches															wt, lb	
	A	B	C ^{①②}	D ^①	E	F	G	H	J	K	L	M	N	P	T		U
4422HL & HR-2	1 1/4	1	9 1/2	8 1/2	5	1/2	5 1/4	2	4 3/8	8 3/8	10 5/8	5 1/4	6	12	4 3/8	2	75
4422HL & HR-3	1 1/2	1	9 1/2	8 1/2	5	1/2	5 1/4	2	4 3/8	8 3/8	10 5/8	5 1/4	6	12	4 3/8	2	75
4422HL & HR-4	2	1 1/4	9 1/2	8 1/2	5	1/2	5 1/4	2	4 3/8	8 3/8	10 5/8	5 1/4	6	12	4 3/8	2	75
4422HL & HR-5	2 1/2	1 1/2	9 1/2	8 1/2	5	1/2	5 1/4	2	4 3/8	8 3/8	10 5/8	5 1/4	6	12	4 3/8	2	75
4422HL & HR-6	3	1 1/2	9 1/2	8 1/2	5	1/2	5 9/16	2	4 3/8	8 3/8	10 5/8	5 1/4	6	12	4 3/8	2	75
4422HL & HR-6-B	3	1 1/2	9 1/2	8 1/2	5	1/2	5 9/16	2	4 3/8	8 3/8	10 5/8	5 1/4	6	12	4 3/8	2	75
4422HL & HR-7-A	4	2 1/2	11	10	7	5/16	6 1/4	2 5/8	5 7/8	11	14 1/16	6 1/8	6 3/4	13 1/2	5 1/2	2 1/8	130
4422HL & HR-7-B	4	2 1/2	11	10	7	5/16	6 1/4	2 5/8	5 7/8	11	14 1/16	6 1/8	6 3/4	13 1/2	5 1/2	2 1/8	130
4422HL & HR-8-A ^⑤	6	2 1/2	11	10	7	5/16	10 1/16	2 5/8	5 7/8	11	14 1/16	6 1/8	6 3/4	13 1/2	5 1/2	2 1/8	140

① Furnace opening should be 1/2" larger than dimension C or D to allow for fillets and draft on mounting plate.

② C dimension used for jacketed tiles only.

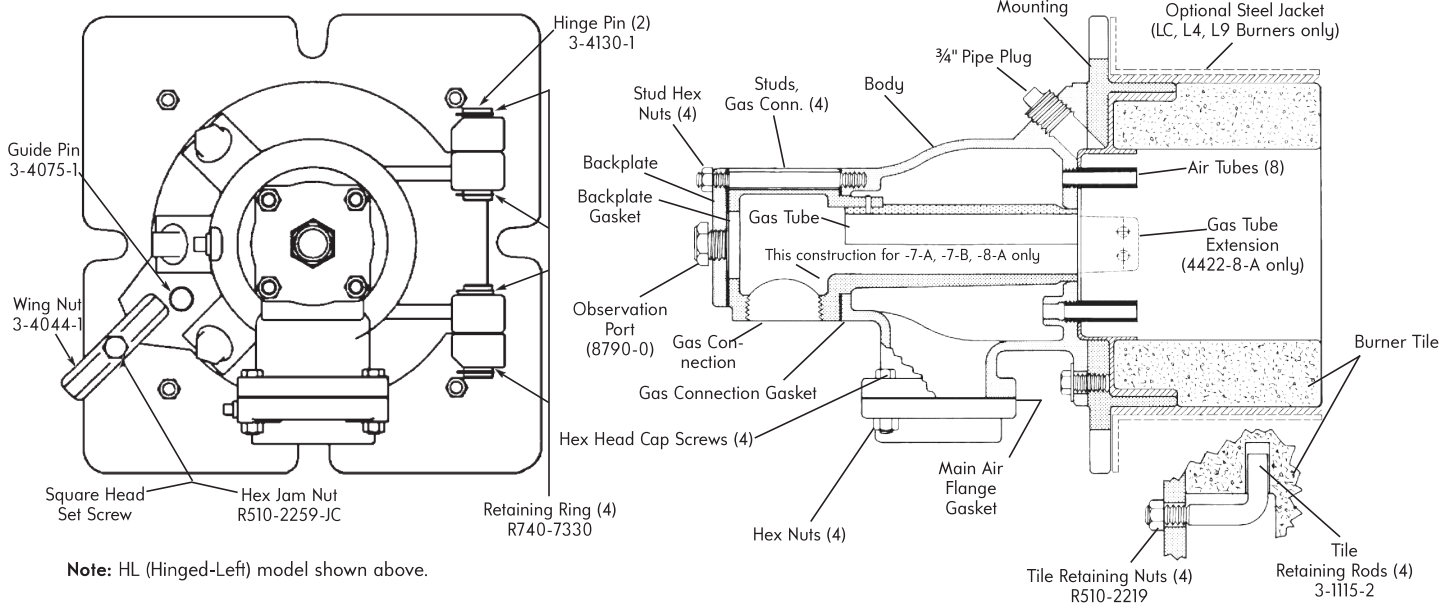
③ 1/4" body air pressure tap on -2, -3, -4, -5, -6, and 6-B. 1/8" body air pressure tap on -7-A, -7-B and 8-A

④ "Flower Pot" type flange for -8-A. Note larger G dimension

⑤ For 4422-8-A, air and gas connections cannot be piped on the same plane. Flower pot type air connection flange would interfere with the 2 1/2" gas line.

⑥ Pilot, Flame Detector, and Observation Port positions are interchangeable as long as Pilot and Flame Detector are in adjacent holes.

3/4" pipe plug furnished for use if no Pilot.



Note: HL (Hinged-Left) model shown above.

PARTS for 4422 Hinged Version (HR & HL) Burners

part name	4422-2	4422-3	4422-4	4422-5	4422-6	4422-6-B	4422-7-A	4422-7-B	4422-8-A	
Hinged-Left Burner Only (ass'y)	4422HL-2-BO	4422HL-3-BO	4422HL-4-BO	4422HL-5-BO	4422HL-6-BO	4422HL-6-BBO	4422HL-7-ABO	4422HL-7-BBO	4422HL-8-ABO	
Hinged-Left Body	← OC3-2754-3 →				← OC3-2754-4 →		← OC3-2766-1 →		OC3-2766-2	
Hinged-Right Burner Only (ass'y)	4422HR-2-BO	4422HR-3-BO	4422HR-4-BO	4422HR-5-BO	4422HR-6-BO	4422HR-6-BBO	4422HR-7-ABO	4422HR-7-BBO	4422HR-8-ABO	
Hinged-Right Body	← OC3-2741-3 →					← OC3-2741-4 →		← OC3-2767-1 →		OC3-2767-2
Gas Connection Ass'y.	4-8620-1	4-8620-1	4-8620-2	4-8620-3	4-8620-3	4-8620-3	4-8620-4	4-8620-4	4-8620-5	
Gas Connection	3-2465-4	3-2465-4	3-2465-5	3-2465-6	3-2465-6	3-2465-6	3-3268-2	3-3268-2	4-6126-1	
Gas Tube	3-2468-2	3-2468-2	3-2468-2	3-2468-2	3-2468-2	3-2468-2	†	†	†	
Gas Tube Ext.	—	—	—	—	—	—	—	—	4-6121-1	
Backplate	4-2459-2	4-2459-2	4-2459-2	4-2459-2	4-2459-2	4-2459-2	3-3269-2	3-3269-2	3-3269-2	
Backplate Gasket	3-2607-1	3-2607-1	3-2607-1	3-2607-1	3-2607-1	3-2607-1	3-3272-1	3-3272-1	3-3272-1	
Studs, Gas Conn. (4)	3-2584-1	3-2584-1	3-2584-1	3-2584-1	3-2584-1	3-2584-1	3-3325-1	3-3325-1	3-3325-1	
Stud Hex Nuts (4)	R510-2219	R510-2219	R510-2219	R510-2219	R510-2219	R510-2219	R510-2259	R510-2259	R510-2259	
Gas Conn. Gasket	3-2473-1	3-2473-1	3-2473-1	3-2473-1	3-2473-1	3-2473-1	3-3272-1	3-3272-1	3-3272-1	
Air Tubes (8)	3-3643-1†	3-3643-2‡	3-3640-2	3-3639-2	3-3554-2	3-5042-1	3-3273-3	3-3273-4	4-3684-2	
Main Air Flange	3-2544-2	3-2544-1	4-1695-2	4-1695-3	4-1695-9	4-1695-9	4-1695-5	4-1695-5	8765-8x-D	
Main Air Flange Gasket	4-5371-2	4-5371-2	4-5371-2	4-5371-2	4-5371-2	4-5371-2	4-5371-3	4-5371-3	4-5371-3	
Hex Head Cap Screws (4)	← R066-2670 →							← R066-2950 →		
Hex Nuts (4)	← R510-2219 →							← R510-2259 →		
Hinged Mtg. Plate (hard wall)	← OC3-2742-1 →							← OC3-2765-1 →		
Burner Tile (9")	4-2121-2	4-2121-2	4-2121-2	4-2121-2	4-2121-2	4-2121-2	4-2142-2	4-2142-2	4-2142-2	
Square Head Set Screw	← R776-6560 →									

Hinged Mounting & Tile Assemblies

Standard	for Hinged Burner Complete w/9" Tile								
Mounting & Tile Assy.*	← 3-6668-12 →						← 3-6668-13 →		
LC Series	for Hinged Burner Complete w/9" Tile and Steel Jacket								
Mounting & Tile Assy.*	← 3-6668-14 →						← 3-6668-15 →		
Tile & Jacket Assembly ^Δ	4-21583-1	4-21583-1	4-21583-1	4-21583-1	4-21583-1	4-21583-1	4-21583-2	4-21583-2	4-21583-2
Jacket (Steel)	4-5377-3	4-5377-3	4-5377-3	4-5377-3	4-5377-3	4-5377-3	4-5378-3	4-5378-3	4-5378-3
L4 Series	for Hinged Burner Complete w/9" Tile and 304 SST Jacket								
Mounting & Tile Assy.*	← 3-6668-16 →						← 3-6668-17 →		
Tile & Jacket Assembly ^Δ	4-21583-3	4-21583-3	4-21583-3	4-21583-3	4-21583-3	4-21583-3	4-21583-4	4-21583-4	4-21583-4
Jacket (304 SST)	4-5377-4	4-5377-4	4-5377-4	4-5377-4	4-5377-4	4-5377-4	4-5378-4	4-5378-4	4-5378-4
L9 Series	for Hinged Burner Complete w/9" Tile and 309 SST Jacket								
Mounting & Tile Assy.*	← 3-6668-18 →						← 3-6668-19 →		
Tile & Jacket Assembly ^Δ	4-21583-5	4-21583-5	4-21583-5	4-21583-5	4-21583-5	4-21583-5	4-21583-6	4-21583-6	4-21583-6
Jacket (309 SST)	4-5377-6	4-5377-6	4-5377-6	4-5377-6	4-5377-6	4-5377-6	4-5378-5	4-5378-5	4-5378-5

* Includes complete mounting, tile, jacket, and retainer assembly.

^Δ Includes tile and jacket only.

† Gas tube is cast with Gas Connection for -7-A, -7-B, and -8-A sizes.

‡ Includes 3-3638-1 adapter.

DIMENSIONS SHOWN ARE SUBJECT TO CHANGE. PLEASE OBTAIN CERTIFIED PRINTS FROM FIVES NORTH AMERICAN COMBUSTION, INC.

IF SPACE LIMITATIONS OR OTHER CONSIDERATIONS MAKE EXACT DIMENSION(S) CRITICAL.

WARNING: Situations dangerous to personnel and property may exist with the operation and maintenance of any combustion equipment. The presence of fuels, oxidants, hot and cold combustion products, hot surfaces, electrical power in control and ignition circuits, etc., are inherent with any combustion application. Components in combustion systems may exceed 160°F (71°C) surface temperatures and present hot surface contact hazard. Fives North American Combustion, Inc. suggests the use of combustion systems that are in compliance with all Safety Codes, Standards, Regulations and Directives; and care in operation.

CONTACT

Fives North American Combustion, Inc.

4455 East 71st Street
Cleveland, OH 44105 - USA
T +1 800 626 3477
F +1 216 373 4237

Fives North American Combustion, Inc.
contact: fna.sales@fivesgroup.com
www.fivesgroup.com

